

Cable Ties and Cable Accessories

(케이블 타이와 악세서리)

| | |
|---|---------|
| Cable Ties-Nylon 6.6 (케이블타이) | D2 |
| Cable Ties-Flammability Nylon 6.6 (난연성케이블타이) | D3 |
| Cable Ties-Weather Resistant Nylon 6.6 (내후성케이블타이) | D4 |
| Lashing Ties, Locking Ties, Cord Band (래싱타이, 록킹타이, 코드밴드) | D5 |
| Marker Ties, In-Line Cable Ties, Push Mount Ties (마커타이, 인라인타이, 푸쉬마운트타이) | D6 |
| Cable Tie Tools, Quick Clamp, Lock Clamp (케이블타이 결속공구, 퀵클램프, 록클램프) | D7 |
| Cable Clamp, Metal Clamps (케이블클램프, 메탈클램프) | D8 |
| Adhesive Backed Cable Tie Mounts, Cable Tie Mounts (부착형타이마운트, 타이마운트) | D9 |
| Low Profile Mounts (로우프로필마운트) | D9 |
| Cable Tie Mounts-Screw Applied (스크류타입마운트) | D10 |
| Saddle Type Tie Mount, Cable Tie Mounts (새들타입마운트, 타이마운트) | D10 |
| Cord Clamps, Cable Tags, Marker Plates, Card Holder (코드클램프, 케이블택, 마커플레이트, 카드홀더) | D11 |
| Spacer Support, Twist Lock Standoff (스페이스서포트, 트위스트록 스탠도프) | D12 |
| Button Support, Screw Support, Wire Saddle (버튼서포트, 스크류서포트, 와이어새들) | D13 |
| Twist Lock, Mounting Button, Screw Cap, Screw Cover (트위스트록, 마운팅버튼, 스크류캡, 스크류커버) | D14 |
| Stainless Steel Cable Ties-Self Locking (스테인레스 스틸 케이블타이) | D15 |
| Stainless Steel Cable Ties-Semi Coated (스테인레스 스틸 케이블타이 - 반코팅) | D16 |
| Stainless Steel Cable Ties-Fully Coated (스테인레스 스틸 케이블타이 - 풀코팅) | D17 |
| Stainless Steel Cable Ties-Wing Lock Type (스테인레스 스틸 케이블타이 - 록킹타입) | D18 |
| Stainless Steel Cable Ties-Releasable Type (스테인레스 스틸 케이블타이 - 재사용타입) | D18 |
| Stainless Steel Cable Ties Tools (스테인레스 스틸 케이블타이 결속공구) | D19 |
| Multi Lock Ties, Cushion Sleeve, Pvc Strip (멀티록타이, 쿠션슬리브, PVC스트립) | D20 |
| Stainless Steel 2-way Mounting Base (스테인레스 스틸 2-way 마운팅 베이스) | D21 |
| Stainless Steel Mounting Base (스테인레스 스틸 마운팅 베이스) | D21 |
| Stainless Steel Marker Plate (스테인레스 스틸 마커플레이트) | D21 |
| Indenter Press, Electric Engraving Pencil (표식 각인 프레스, 전자식 문자 각인 펜슬) | D22 |
| Cable Bracket, Cable Trefoil Cleat (케이블브라켓, 케이블클리트) | D23 |
| Single Way Cable Cleat-Type SCO, SCI (싱글타입 케이블클리트) | D24 |
| Cable Cleats - Trefoil & Single Type (스테인레스 스틸 케이블클리트) | D25~D28 |

CABLE TIES – NYLON 6.6 (케이블타이) TYPE-J

- Flammability : UL 94V-2
- Halogen free - Natural Color Only
- Operating temperature : 85℃
- Color : Natural or All Colors
- For indoor use



| Part Number | Length (mm) | Width (mm) | Thickness (mm) | Max. Bundle Dia. (mm) | Min. Loop Tensile Strength | | Installation Tool No | Package Qty. |
|-------------|-------------|------------|----------------|-----------------------|----------------------------|----|----------------------|--------------|
| | | | | | Lbs | Kg | | |

• Subminiature-Series 2.5

| | | | | | | | | |
|-------|-----|-----|-----|----|----|-----|--------------------|------|
| J-100 | 103 | 2.5 | 0.9 | 22 | 18 | 8.1 | JOT-702 JOT-328 | 1000 |
| J-162 | 162 | | 1.0 | 40 | | | | |
| J-202 | 200 | | 1.0 | 51 | | | | |

• Intermediate-Series 3.6

| | | | | | | | | |
|-------|-----|-----|-----|-----|----|------|--------------------|------|
| J-140 | 148 | 3.6 | 1.1 | 35 | 40 | 18.1 | JOT-702 JOT-328 | 1000 |
| J-203 | 200 | | 1.3 | 51 | | | | |
| J-303 | 300 | | 1.3 | 77 | | | | |
| J-372 | 368 | | 1.3 | 102 | | | | |

• Standard-Series 4.8

| | | | | | | | | |
|-------|-----|-----|-----|-----|----|------|--------------------|------|
| J-200 | 201 | 4.8 | 1.3 | 48 | 50 | 22.6 | JOT-702 JOT-328 | 1000 |
| J-250 | 252 | | 1.3 | 64 | | | | 500 |
| J-300 | 300 | | 1.4 | 76 | | | | |
| J-373 | 368 | | 1.5 | 102 | | | | |

• Light Heavy-Series 6.0

| | | | | | | | | |
|-------|-----|-----|-----|----|-----|------|--------------------------------|-----|
| J-270 | 270 | 6.0 | 1.4 | 73 | 100 | 45.3 | JOT-519, JOT-600L JOT-GS4EH | 500 |
|-------|-----|-----|-----|----|-----|------|--------------------------------|-----|

• Duty Heavy-Series 7.6

| | | | | | | | | |
|-------|-----|-----|-----|-----|-----|------|----------------------------------|-----|
| J-307 | 300 | 7.6 | 1.6 | 76 | 120 | 54.4 | JOT-519 JOT-600L JOT-GS4EH | 300 |
| J-370 | 370 | | 1.6 | 102 | | | | |

• Heavy-Series 9.0

| | | | | | | | | |
|--------|-----|-----|-----|-----|-----|------|----------------------------------|-----|
| J-450 | 450 | 9.0 | 1.9 | 127 | 175 | 79.3 | JOT-519 JOT-600L JOT-GS4EH | 100 |
| J-530 | 530 | | | 152 | | | | |
| J-780 | 762 | | | 229 | | | | |
| J-1000 | 940 | | | 305 | | | | |

• Extra Heavy-Series 12.7

| | | | | | | | | |
|---------|-----|------|-----|-----|-----|-----|-----------------------|-----|
| J-300EH | 300 | 12.7 | 2.1 | 70 | 250 | 113 | JOT-600L JOT-GS4EH | 100 |
| J-400EH | 400 | | | 102 | | | | |
| J-540EH | 540 | | | 150 | | | | |

CABLE TIES – NYLON 6.6 (난연성케이블타이)

TYPE-JV

- Flammability : UL 94V-0
- Halogen free
- Operating temperature : 85℃
- Color : Natural only
- For indoor use



| Part Number | Length (mm) | Width (mm) | Thickness (mm) | Max. Bundle Dia. (mm) | Min. Loop Tensile Strength | | Installation Tool No | Package Qty. |
|-------------|-------------|------------|----------------|-----------------------|----------------------------|----|----------------------|--------------|
| | | | | | Lbs | Kg | | |

• Subminiature-Series 2.5

| | | | | | | | | |
|--------|-----|-----|-----|----|----|-----|--------------------|------|
| JV-100 | 103 | 2.5 | 0.9 | 22 | 18 | 8.1 | JOT-702 JOT-328 | 1000 |
| JV-162 | 162 | | 1.0 | 40 | | | | |
| JV-202 | 200 | | 1.0 | 51 | | | | |

• Intermediate-Series 3.6

| | | | | | | | | |
|--------|-----|-----|-----|-----|----|------|--------------------|------|
| JV-140 | 148 | 3.6 | 1.1 | 35 | 40 | 18.1 | JOT-702 JOT-328 | 1000 |
| JV-203 | 200 | | 1.3 | 51 | | | | |
| JV-303 | 300 | | 1.3 | 77 | | | | |
| JV-372 | 368 | | 1.3 | 102 | | | | |

• Standard-Series 4.8

| | | | | | | | | |
|--------|-----|-----|-----|-----|----|------|--------------------|------|
| JV-200 | 201 | 4.8 | 1.3 | 48 | 50 | 22.6 | JOT-702 JOT-328 | 1000 |
| JV-250 | 249 | | 1.3 | 64 | | | | 500 |
| JV-300 | 300 | | 1.4 | 76 | | | | |
| JV-373 | 368 | | 1.5 | 102 | | | | |

• Light Heavy-Series 6.0

| | | | | | | | | |
|--------|-----|-----|-----|----|-----|------|--------------------------------|-----|
| JV-270 | 270 | 6.0 | 1.4 | 73 | 100 | 45.3 | JOT-519, JOT-600L JOT-GS4EH | 500 |
|--------|-----|-----|-----|----|-----|------|--------------------------------|-----|

• Duty Heavy-Series 7.6

| | | | | | | | | |
|--------|-----|-----|-----|-----|-----|------|----------------------------------|-----|
| JV-307 | 300 | 7.6 | 1.6 | 76 | 120 | 54.4 | JOT-519 JOT-600L JOT-GS4EH | 300 |
| JV-370 | 370 | | 1.6 | 102 | | | | |

• Heavy-Series 9.0

| | | | | | | | | |
|---------|-----|-----|-----|-----|-----|------|----------------------------------|-----|
| JV-450 | 450 | 9.0 | 1.9 | 127 | 175 | 79.3 | JOT-519 JOT-600L JOT-GS4EH | 100 |
| JV-530 | 530 | | | 152 | | | | |
| JV-780 | 762 | | | 229 | | | | |
| JV-1000 | 940 | | | 305 | | | | |

• Extra Heavy-Series 12.7

| | | | | | | | | |
|----------|-----|------|-----|-----|-----|-----|-----------------------|-----|
| JV-300EH | 300 | 12.7 | 2.1 | 70 | 250 | 113 | JOT-600L JOT-GS4EH | 100 |
| JV-400EH | 400 | | | 102 | | | | |
| JV-540EH | 540 | | | 150 | | | | |

CABLE TIES – WEATHER RESISTANT NYLON 6.6 (내후성케이블타이) TYPE-JW

- Flammability : UL 94V-2
- Color : UV Black
- Operating temperature : 85℃
- Greater resistance to damage caused by ultraviolet light
- indoor or outdoor use



| Part Number | Length (mm) | Width (mm) | Thickness (mm) | Max. Bundle Dia. (mm) | Min. Loop Tensile Strength | | Installation Tool No | Package Qty. |
|-------------|-------------|------------|----------------|-----------------------|----------------------------|----|----------------------|--------------|
| | | | | | Lbs | Kg | | |

• Subminiature-Series 2.5

| | | | | | | | | |
|--------|-----|-----|-----|----|----|-----|--------------------|------|
| JW-100 | 103 | 2.5 | 0.9 | 22 | 18 | 8.1 | JOT-702 JOT-328 | 1000 |
| JW-162 | 162 | | 1.0 | 40 | | | | |
| JW-202 | 200 | | 1.0 | 51 | | | | |

• Intermediate-Series 3.6

| | | | | | | | | |
|--------|-----|-----|-----|-----|----|------|--------------------|------|
| JW-140 | 148 | 3.6 | 1.1 | 35 | 40 | 18.1 | JOT-702 JOT-328 | 1000 |
| JW-203 | 200 | | 1.3 | 51 | | | | |
| JW-303 | 300 | | 1.3 | 77 | | | | |
| JW-372 | 368 | | 1.3 | 102 | | | | |

• Standard-Series 4.8

| | | | | | | | | |
|--------|-----|-----|-----|-----|----|------|--------------------|------|
| JW-200 | 201 | 4.8 | 1.3 | 48 | 50 | 22.6 | JOT-702 JOT-328 | 1000 |
| JW-250 | 252 | | 1.3 | 64 | | | | 500 |
| JW-300 | 300 | | 1.4 | 76 | | | | |
| JW-373 | 368 | | 1.4 | 102 | | | | |

• Light Heavy-Series 6.0

| | | | | | | | | |
|--------|-----|-----|-----|----|-----|------|--------------------------------|-----|
| JW-270 | 270 | 6.0 | 1.4 | 73 | 100 | 45.3 | JOT-519, JOT-600L JOT-GS4EH | 500 |
|--------|-----|-----|-----|----|-----|------|--------------------------------|-----|

• Duty Heavy-Series 7.6

| | | | | | | | | |
|--------|-----|-----|-----|-----|-----|------|----------------------------------|-----|
| JW-307 | 300 | 7.6 | 1.6 | 76 | 120 | 54.4 | JOT-519 JOT-600L JOT-GS4EH | 300 |
| JW-370 | 370 | | 1.6 | 102 | | | | |

• Heavy-Series 9.0

| | | | | | | | | |
|---------|-----|-----|-----|-----|-----|------|----------------------------------|-----|
| JW-450 | 450 | 9.0 | 1.9 | 127 | 175 | 79.3 | JOT-519 JOT-600L JOT-GS4EH | 100 |
| JW-530 | 530 | | | 152 | | | | |
| JW-780 | 762 | | | 229 | | | | |
| JW-1000 | 940 | | | 305 | | | | |

• Extra Heavy-Series 12.7

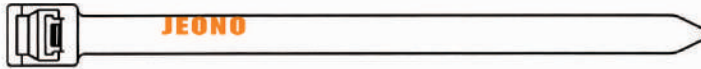
| | | | | | | | | |
|---------|-----|------|-----|-----|-----|-----|-----------------------|-----|
| J-300EH | 300 | 12.7 | 2.1 | 70 | 250 | 113 | JOT-600L JOT-GS4EH | 100 |
| J-400EH | 400 | | | 102 | | | | |
| J-540EH | 540 | | | 150 | | | | |

*When ordering Heat Stabilized material add postfix "H" to the part Number (ex JW-100 → JWH-100)

LASHING TIES – NYLON 6.6 (래싱타이)

TYPE-RELEASABLE(LT)

- Flammability : UL 94V-2
- Color : Natural or All Colors
- Operating temperature : 85℃
- For indoor use



• Extra Heavy-Series 12.7



Lloyd's Register

ClassNK



| Part Number | Length (mm) | Width (mm) | Thickness (mm) | Max. Bundle Dia (mm) | Min. Loop Tensile Strength | | Installation Tool No | Package Qty. |
|-------------|-------------|------------|----------------|----------------------|----------------------------|-----|-----------------------|--------------|
| | | | | | Lbs | Kg | | |
| JLT-540 | 540 | 12.7 | 1.9 | 150 | 250 | 113 | JOT-600L JOT-GS4EH | 50 |

LASHING TIES – WEATHER RESISTANT NYLON 6.6 (래싱타이)

TYPE-RELEASABLE(LTW)

- Flammability : UL 94V-2
- Color : UV Black
- Operating temperature : 85℃
- Greater resistance to damage caused by ultraviolet light - indoor or outdoor use



• Extra Heavy-Series 12.7



Lloyd's Register

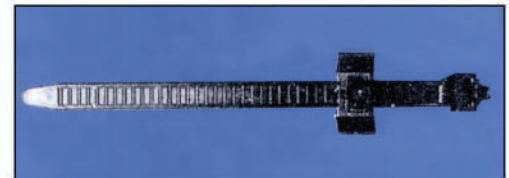
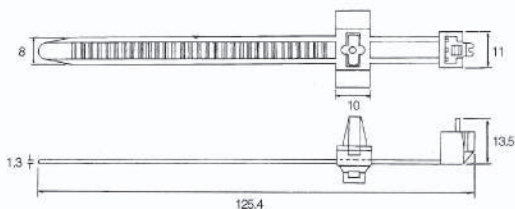
ClassNK



| Part Number | Length (mm) | Width (mm) | Thickness (mm) | Max. Bundle Dia (mm) | Min. Loop Tensile Strength | | Installation Tool No | Package Qty. |
|-------------|-------------|------------|----------------|----------------------|----------------------------|-----|-----------------------|--------------|
| | | | | | Lbs | Kg | | |
| JLTW-540 | 540 | 12.7 | 1.9 | 150 | 250 | 113 | JOT-600L JOT-GS4EH | 50 |

LOCKING TIES – NYLON 6.6 (록킹타이)

- Flammability : UL 94V-2
- Color : Natural or UV Black
- Operating temperature : 85℃
- Mounting Hole Dia : 7.0Ø

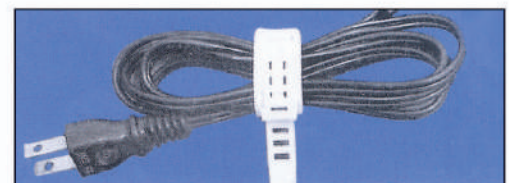
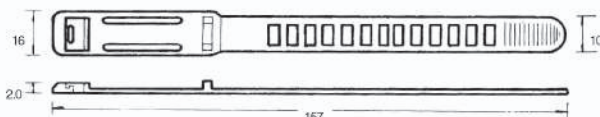


Part Number

JLCT-125

CORD BAND – Polyethylene (코드밴드)

- Color : Natural or UV Black



Part Number

JCB-150

D

MARKER TIES – NYLON 6.6 (마커타이)

- Flammability : UL 94V-2
- Color : Natural or All Colors
- Operating temperature : 85°C
- For indoor use



JMT-1M, 2M



JMT-1B



JMT-1MA



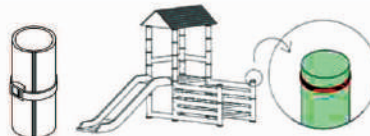
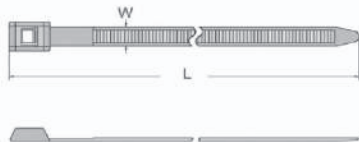
JMT-2S



| Part Number | Maker Type | Length (mm) | Width (mm) | Marker Write-On Area(mm) | Max. Bundle Dia(mm) | Min. Loop Tensile Strength | | Packing Qty. |
|-------------|------------------|-------------|------------|--------------------------|---------------------|----------------------------|-----|--------------|
| | | | | | | Lbs | Kg | |
| JMT-1B | Flag(Horizontal) | 110 | 2.5 | 25×7.5 | 20 | 18 | 8.1 | 1,000 |
| JMT-1M | Wrap(Horizonta) | 100 | | 25×8 | 19 | | | |
| JMT-2M | | 200 | | 25×8 | 51 | | | |
| JMT-1MA | Flag(Vertical) | 130 | | 28×20 | 22 | | | |
| JMT-2S | Wrap(Vertical) | 200 | 4.6 | 28×13 | 50 | 50 | 22 | |

IN-LINE CABLE TIES – NYLON 6.6 (인라인타이)

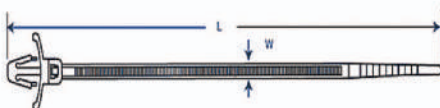
- Flammability : UL94V-2
- Color : Natural or All Colors
- Feature : Flat headed low profile design to be used with playground equipment to avoid harming playing children



| Part Number | Length (mm) | Width (mm) | Max. Bundle Dia (mm) | Min. Loop Tensile Strength | | Package Qty. |
|-------------|-------------|------------|----------------------|----------------------------|----|--------------|
| | | | | Lbs | Kg | |
| JIC-255 | 255 | 9.0 | 74 | 55 | 25 | 100 |
| JiC-391 | 391 | 9.0 | 117 | 55 | 25 | 100 |

PUSH MOUNT TIES – NYLON 6.6 (푸쉬마운트타이)

- Flammability : UL94V-2
- Color : Natural or Black
- Feature : Press the tie into a pre-drilled hole and bind the cord by securing the tie



| Part Number | Length (mm) | Width (mm) | Max. Bundle Dia(mm) | Mounting hole diameter | Min. Loop Tensile Strength | | Packing Qty. |
|-------------|-------------|------------|---------------------|------------------------|----------------------------|------|--------------|
| | | | | | Lbs | Kg | |
| JPMT-100 | 112 | 2.5 | 25 | 4.6 | 18 | 8 | 1,000 |
| JPMT-152 | 157 | 3.6 | 38 | 4.8 | 40 | 17.8 | |
| JPMT-165 | 178 | 4.8 | 41 | 4.8 | 50 | 22 | |
| JPMT-200 | 201 | 4.8 | 50 | 6.0 | | | |

CABLE TIE TOOLS (케이블타이)

- Fasten and Automatic Cut Ties with Adjustable bundling pressure.
- TPR Trigger handle



JOT-702

- For Cable Tie widths up to 4.8mm
- Thickness up to 1.3mm



JOT-328

- For Cable Tie widths up to 4.8mm
- Thickness up to 1.3mm



JOT-519

- For Cable Tie widths up to 9.0mm
- Thickness up to 2.3mm

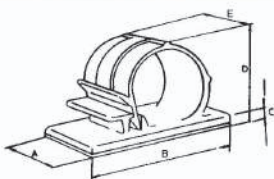


JOT-600L

- For Tensioning and cut-off Max.Cable Ties width 13mm
- Thickness up to 2.3mm

QUICK CLAMPS (퀵클램프)

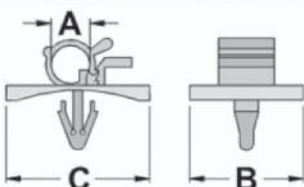
- Material : Nylon 6.6
- Color : Gray



| Part Number | Mounting Method | Dimension (mm) | | | | | |
|-------------|-----------------|----------------|------|-----|------|------|--------|
| | | A | B | C | D | E | Bundle |
| JOQC-101 | Adhesive | 13.7 | 25.0 | 3.3 | 9.8 | 9.0 | 5.3 |
| JOQC-102 | | 13.7 | 24.6 | 3.3 | 11.5 | 10.0 | 6.5 |
| JOQC-103 | | 16.1 | 25.0 | 3.3 | 13.8 | 12.5 | 9.2 |
| JOQC-104 | | 19.2 | 29.3 | 3.8 | 17.7 | 15.0 | 13.5 |
| JOQC-105 | | 25.1 | 34.2 | 3.8 | 23.0 | 17.4 | 16.5 |
| JOQC-106 | | 25.1 | 34.2 | 3.8 | 25.2 | 16.6 | 20.0 |

LOCK CLAMPS (록클램프)

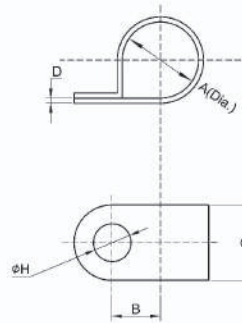
- Material : Nylon 6.6
- Color : Gray



| Part Number | Dimension (mm) | | | Packing Qty. |
|-------------|----------------|------|----|--------------|
| | A | B | C | |
| JOLC-10 | 6~7 | 20 | 25 | 100 |
| JOLC-20 | 7~8 | 20 | 25 | |
| JOLC-30 | 9~10 | 24.5 | 30 | |
| JOLC-40 | 12~14 | 24.5 | 30 | |
| JOLC-50 | 16~18 | 24.5 | 30 | |

CABLE CLAMPS (케이블클램프)

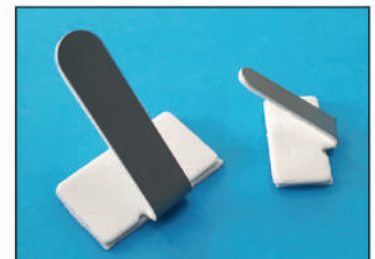
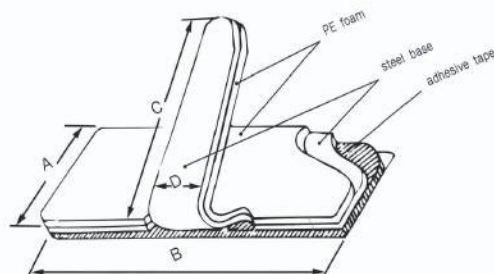
- Material : Nylon 6.6
- Color : Natural or Black



| Part Number | Dimension (mm) | | | | | Package Qty. |
|-------------|------------------------|------|------|-----|-----------------|--------------|
| | Max. Bundle Diameter A | B | C | D | H | |
| JOC-2N | 2.8 | 9.5 | 9.5 | 1.1 | 4.4 M4 Screw | 1000 |
| JOC-3N | 4.6 | 10.3 | | | | |
| JOC-4N | 5.6 | 11.1 | | | | |
| JOC-5N | 7.4 | 11.9 | | | | |
| JOC-6N | 10 | 12.7 | | | | |
| JOC-7N | 10.7 | 13.5 | | | | |
| JOC-8N | 11.9 | 14.3 | | | | |
| JOC-9N | 13.5 | 15.1 | | | | |
| JOC-10N | 14 | 15.9 | | | | |
| JOC-11N | 16.8 | 17.5 | 12.7 | 1.5 | 5.1 M5 Screw | 500 |
| JOC-14N | 20.4 | 19.8 | | | | |
| JOC-16N | 23.0 | 21.3 | | | | |
| JOC-18N | 25.0 | 23 | | | | |
| JOC-24N | 31.2 | 27 | | | | |
| JOC-28N | 37.5 | 30.1 | | | | |
| JOC-32N | 53 | 33 | 12 | | | 300 |

METAL CLAMPS (메탈클램프)

- Material : SPC-1 steel



| Part Number | Mounting Method | Dimensions(mm) | | | | Bundle | Package Qty. |
|-------------|-----------------|----------------|----|----|-----|----------|--------------|
| | | A | B | C | D | | |
| JOMC-101 | Adhesive | 7 | 15 | 10 | 5 | Ø3.0~4.0 | 1000 |
| JOMC-102 | | 10 | 19 | 25 | 6 | Ø7.0~8.0 | |
| JOMC-103 | | 14 | 25 | 45 | 7 | Ø12~13 | 500 |
| JOMC-104 | | 28 | 40 | 38 | 7.5 | Ø11~12 | 250 |

ADHESIVE BACKED CABLE TIE MOUNTS

(부착형타이마운트)

- Material : Nylon 6.6
- Color : Natural or Black
- Allows cable tie entry from all four sides
- Available in multiple sizes to match application load requirements

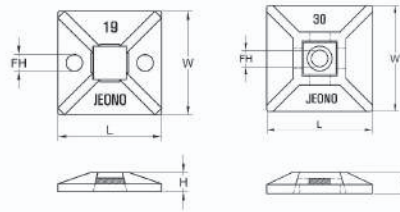
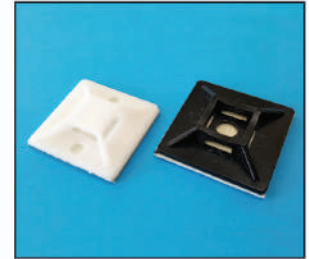


Fig 1

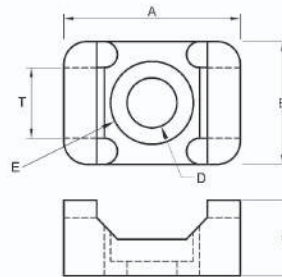
Fig 2



| Part Number | Fig No. | Maximum Tie Width Accom. | Mounting Method | Dimension(mm) | | | | Packing Qty. |
|-------------|---------|--------------------------|-------------------|---------------|----|-----|-----|--------------|
| | | | | L | W | H | FH | |
| JOMB-19 | 1 | 3.6mm | Adhesive or screw | 19 | 19 | 4.2 | 3.1 | 1,000 |
| JOMB-25 | | 4.8mm | | 25 | 25 | 4.7 | 4.0 | |
| JOMB-38 | | 9.0mm | | 38 | 38 | 6.0 | 4.7 | |
| JOMB-30 | 2 | 7.6mm | | 29 | 29 | 5.7 | 4.2 | 500 |

CABLE TIE MOUNTS (타이마운트)

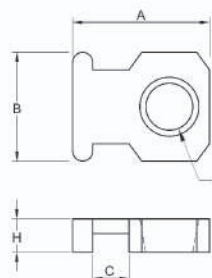
- Material : Nylon 6.6
- Color : Natural or Black
- Unique cradle design provides maximum stability for the cable bundle
- Low profile design keeps bundle close to mounting surface



| Part Number | Maximum Tie Width Accom. | Dimensions (mm) | | | | | | Package Qty. |
|-------------|--------------------------|-----------------|------|------|------|--------------|----------------------|--------------|
| | | T | A | B | C | D (Hole Dia) | E (Counter bore Dia) | |
| JOTM-1S6 | 3.6 | 4.0 | 12.8 | 7.0 | 5.8 | 3.3 | 5.8 | 1,000 |
| JOTM-2S6 | 4.8 | 5.0 | 15.0 | 9.5 | 7.0 | 3.8 | 7.3 | |
| JOTM-3S10 | 7.6 | 8.5 | 23.8 | 15.2 | 11.3 | 5.1 | 10.0 | |
| JOTM-3S25 | | | | | | 6.6 | 10.0 | |
| JOTM-4S10 | 9.0 | 9.0 | 23.3 | 16.0 | 9.8 | 5.2 | 10.8 | |
| JOTM-4S25 | | | | | | 6.3 | 10.8 | |
| JOTM-5S10 | 9.0 | 10.4 | 20.8 | 17.4 | 10.5 | 5.9 | 11.2 | |

LOW PROFILE MOUNTS (로우프로필마운트)

- Material : Nylon 6.6
- Color : Natural or Black
- Low profile design keeps bundle close to mounting surface
- Small overall size
- Install with a screw or rivet for a strong, secure installation

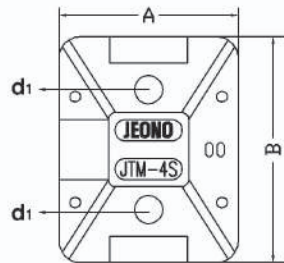


| Part Number | Maximum Tie Width Accom. | Mounting Method | Dimensions (mm) | | | | | Package Qty. |
|-------------|--------------------------|----------------------|-----------------|------|-----|-----|-----|--------------|
| | | | A | B | C | H | D | |
| JOLM-3 | 2.5 | M3 Countersunk Screw | 10.2 | 8.1 | 2.7 | 2.5 | 3.5 | 1000 |
| JOLM-4 | 4.8 | M4 Countersunk Screw | 19.1 | 12.7 | 5.0 | 3.0 | 4.6 | |

CABLE TIE MOUNTS—SCREW APPLIED

(스크류타입마운트)

- Material : Nylon 6.6
- Color : Natural or Black

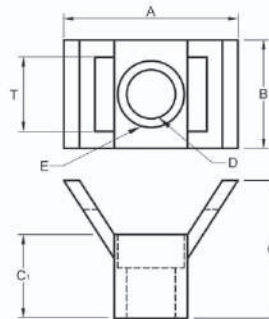


| Part Number | Max Tie Width Accom. | Mounting Method | Dimensions (mm) | | | Package Qty. |
|-------------|----------------------|-----------------|-----------------|------|-----|--------------|
| | | | A | B | d1 | |
| JTM-4S | 7.9 | M4 screw | 25.6 | 32.6 | 4.2 | 500 |

SADDLE TYPE TIE MOUNTS

(새들타입마운트)

- Materials : Nylon 6.6 UL 94V-2
- Color : Natural or Black
- Saddle design provide maxium stability to wire bundle

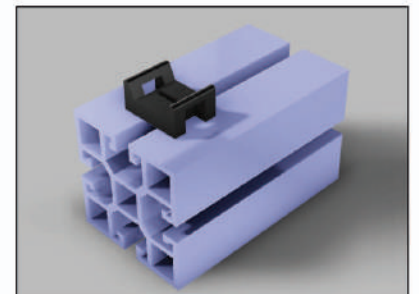
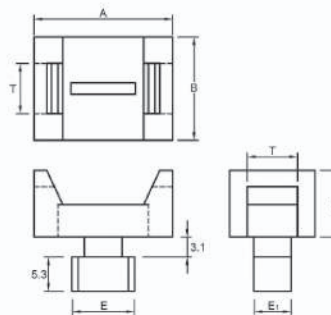


| Part Number | Maximum Tie Width Accom. | Dimensions (mm) | | | | | | | Package Qty. |
|-------------|--------------------------|-----------------|------|------|------|------|--------------|----------------------|--------------|
| | | T | A | B | C | C1 | D (Hole Dia) | E (Counter bore Dia) | |
| JOHC-3 | 9.0 | 9.5 | 23.0 | 13.8 | 17.5 | 10.8 | 5.3 | 8.5 | 100 |
| JOHC-4 | 9.0 | 9.3 | 30.0 | 14.7 | 11.6 | 5.9 | 5.0 | 9.5 | |

CABLE TIE MOUNTS

(타입마운트)

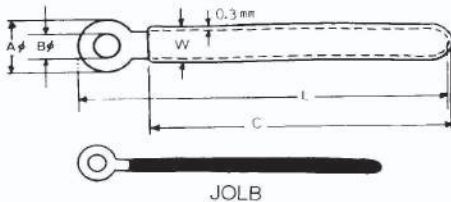
- Materials : Nylon 6.6 UL 94V-2
- ?Color : Natural or Black
- Saddle design provide maxium stability to wire bundle



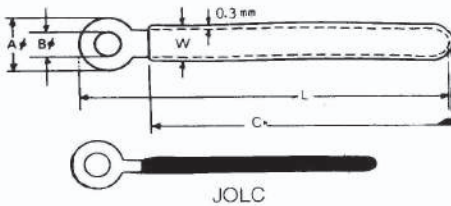
| Part Number | Maximum Tie Width Accom. | Dimensions (mm) | | | | | | Package Qty. |
|-------------|--------------------------|-----------------|------|------|------|-----|-----|--------------|
| | | T | A | B | C | E | E1 | |
| JOHC-5 | 7.6 | 7.8 | 21.5 | 16.0 | 10.0 | 9.7 | 5.8 | 100 |

CORD CLAMPS (코드클램프)

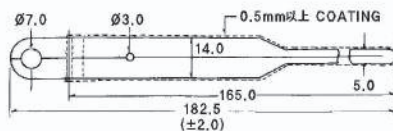
- Material : Galvanized Iron
- PVC Coating
- Color : Black



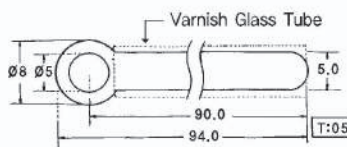
JOLB



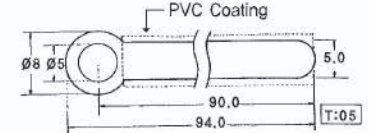
JOLC



•PART NO : JOLD-2



•PART NO : JOLF-94



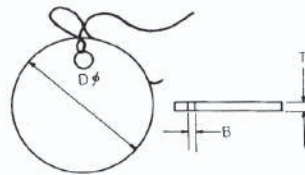
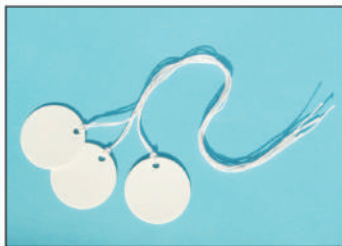
•PART NO : JOLF-94-1

| Part Number | AØ | BØ | C | W | L | Q'ty/bag |
|-------------|-----|-----|----|-----|----|----------|
| JOLB-2 | 6.0 | 3.2 | 41 | 2.6 | 50 | 100 |

| Part Number | AØ | BØ | C | W | L | Q'ty/bag |
|-------------|-----|-----|----|-----|----|----------|
| JOLC-2 | 9.0 | 4.2 | 41 | 2.6 | 50 | 100 |

CABLE TAGS (케이블택)

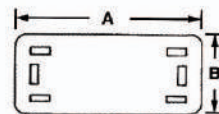
- Material : Fiber
- Color : White



| Part Number | Dimensions (mm) | | |
|-------------|-----------------|-----|-----|
| | D | B | T |
| JTG-20 | 20 | 3.2 | 1.0 |
| JTG-25 | 25 | | |
| JTG-30 | 30 | | |
| JTG-40 | 40 | | |

MARKER PLATES - PVC (마커플레이트)

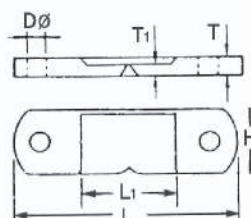
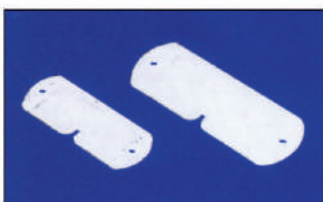
- Color : Ivory



| Part Number | Maximum Tie Width Accom. | Mounting Method | Dimensions (mm) | | Thickness (mm) | Package Qty. |
|-------------|--------------------------|-----------------|-----------------|----|----------------|--------------|
| | | | A | B | | |
| JTC-1 | 4.8 | Cable Ties | 45 | 19 | 0.3 | 500 |
| JTC-2 | | | 60 | 40 | | |

CARD HOLDER (카드홀더)

- Material : PS
- Color : Clear



| Part Number | Dimensions (mm) | | | | | |
|-------------|-----------------|----|----|----|-----|-----|
| | DØ | H | L | L1 | T | T1 |
| JCH-1 | 3.0 | 18 | 45 | 33 | 2.7 | 1.3 |
| JCH-2 | 3.7 | 23 | 61 | 46 | 3.0 | 2.0 |

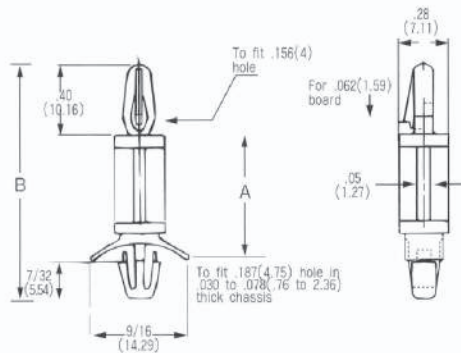
SPACER SUPPORT

(스페이스서포트)

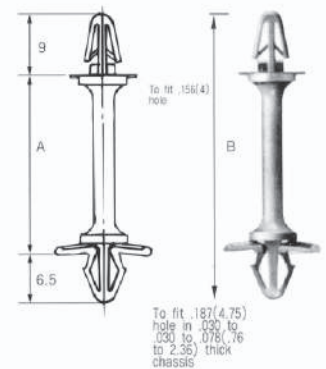
- Material : Nylon 6.6
- Color : Natural
- Two Styles Choice Between a Locking or Tension Barb End.



■ Tension Type



■ Locking Type



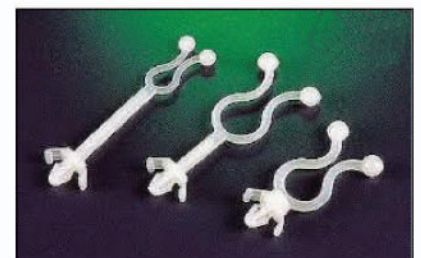
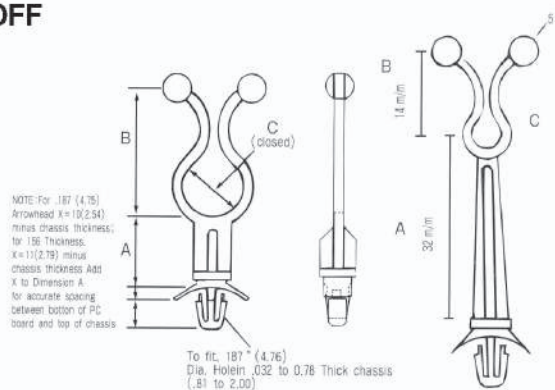
- Both ends lock by hand; no tools required
- Strong, dependable grip
- Materials: Nylon 6/6

| Part No. | Dimension (mm) | | BARB TYPE | Part No. | Dimension (mm) | | BARB TYPE |
|----------|----------------|------|-----------|----------|----------------|------|-----------|
| | A | B | | | A | B | |
| JOSS-4N | 4.8 | 22.8 | Tension | JOSS-19N | 19 | 37 | Tension |
| | | 20 | Locking | | | 34.5 | Locking |
| JOSS-6N | 6.4 | 24.4 | Tension | JOSS-22N | 22.2 | 40.2 | Tension |
| | | 21.9 | Locking | | | 37.7 | Locking |
| JOSS-9N | 9.5 | 27.5 | Tension | JOSS-25N | 25.4 | 43.4 | Tension |
| | | 25 | Locking | | | 40.9 | Locking |
| JOSS-11N | 11.1 | 29.1 | Tension | JOSS-28N | 28.5 | 46.5 | Tension |
| | | 26.6 | Locking | | | 44 | Locking |
| JOSS-13N | 12.7 | 30.7 | Tension | JOSS-31N | 31.7 | 49.7 | Tension |
| | | 28.2 | Locking | | | 47.2 | Locking |
| JOSS-16N | 15.8 | 33.8 | Tension | JOSS-35N | 34.9 | 52.9 | Tension |
| | | 31.3 | Locking | | | 50.4 | Locking |

TWIST LOCK STANDOFF

(트위스트록 스탠도프)

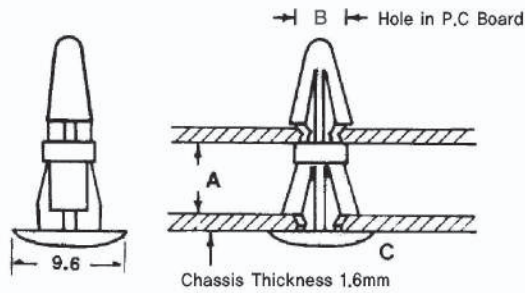
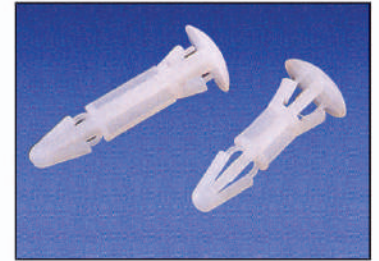
- Material : Nylon 6.6
- Color : Natural



| Part No. | A (mm) | B (mm) | C-Wire Bundle Dia (mm) | Part No. | A (mm) | B (mm) | C-Wire Bundle Dia (mm) |
|-----------|--------|--------|------------------------|-----------|--------|--------|------------------------|
| JOTS-2NA | 4.76 | 23 | 7±1.58 | JOTS-3NB | 4.76 | 29.97 | 12.7-15.24±1.58 |
| JOTS-3NA | 4.76 | | 10.16-12.7±1.58 | JOTS-8NB | 12.7 | | |
| JOTS-8NA | 12.7 | | | JOTS-12NB | 19.05 | | |
| JOTS-12NA | 19.05 | 25 | | JOTS-16NB | 25.4 | | |
| JOTS-16NA | 25.4 | | | JOTS-20NB | 31.75 | | |
| JOTS-20NA | 31.75 | | | JOTS-1NC | 32 | 14 | 4.2 |
| | | | | JOTS-2NC | 6 | 14 | 3.5 |

BUTTON SUPPORT (버튼서포트)

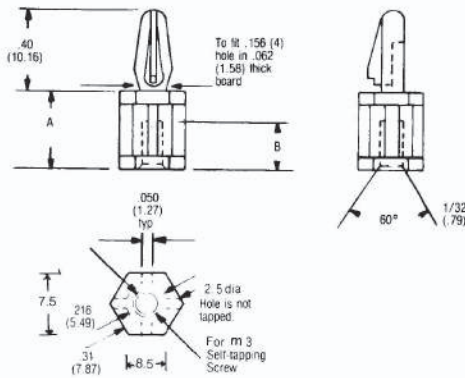
- Material : Nylon 6.6
- Color : Natural



| Part Number | Dimension (mm) | | |
|-------------|----------------|---|---|
| | A | B | C |
| JOBS-6R | 6 | 4 | 5 |
| JOBS-8R | 8 | 4 | 5 |
| JOBS-10R | 10 | 4 | 5 |
| JOBS-12R | 12 | 4 | 5 |
| JOBS-16R | 16 | 4 | 5 |
| JOBS-22R | 22 | 4 | 5 |
| JOBS-26R | 25.4 | 4 | 5 |
| JOBS-32R | 31.7 | 4 | 5 |
| JOBS-35R | 35 | 4 | 5 |

SCREW SUPPORT (스crew서포트)

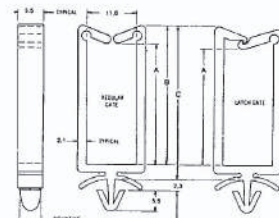
- Material : Nylon 6.6
- Color : Natural



| Part Number | Dim. A (mm) | Dim. B (mm) |
|-------------|-------------|-------------|
| JOCs-4N | 6.35 | 6.16 |
| JOCs-6N | 9.53 | |
| JOCs-8N | 12.70 | |
| JOCs-10N | 15.88 | 7.94 |
| JOCs-12N | 19.05 | |

WIRE SADDLE (와이어새들)

- Material : Nylon 6.6
- Color : Natural

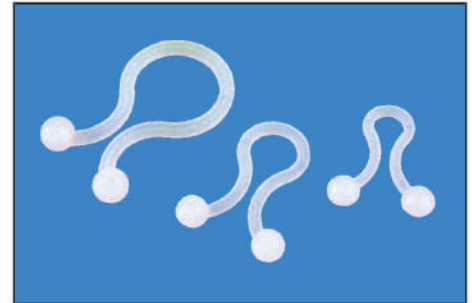


| Part Number | Type | Dimensions(mm) | | |
|-------------|--------------|----------------|------|------|
| | | A | B | C |
| JOWS-1N | Regular Gate | 4.4 | 9.5 | 13 |
| | Latch Gate | 3.6 | 9.5 | 13 |
| JOWS-2N | Regular Gate | 9.9 | 14.7 | 18.2 |
| | Latch Gate | 9.1 | 14.7 | 18.2 |
| JOWS-3N | Regular Gate | 19 | 23.8 | 27 |
| | Latch Gate | 18.2 | 23.8 | 27 |
| JOWS-4N | Regular Gate | 27 | 31.7 | 35 |
| | Latch Gate | 26.2 | 31.7 | 35 |

TWIST LOCK (트위스트록)

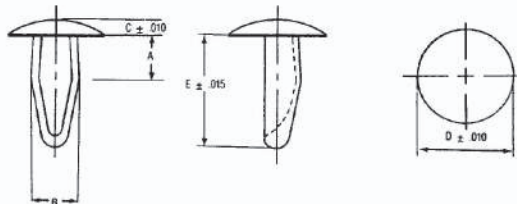
- Material : Nylon 6.6
- Color : Natural or Black

| Part Number | Dimension (mm) | |
|-------------|----------------|------------|
| | Length | Bundle Dia |
| JTL-21 | 21.5 | 4.0 |
| JTL-23 | 26.2 | 8.2 |
| JTL-26 | 29.5 | 11.2 |
| JTL-30 | 30.8 | 14.5 |
| JTL-38 | 38 | 18 |
| JTL-40 | 40 | 22 |



MOUNTING BUTTON (마운팅버튼)

- Material : Nylon 6.6
- Color : Natural



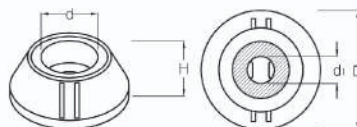
| Part Number | Material Thickness "A" (mm) | Hole Size "B" (mm) | Head Height "C" (mm) | Head Dia "D" (mm) | Body Length "E" (mm) |
|-------------|-----------------------------|--------------------|----------------------|-------------------|----------------------|
| JOMB-31 | 3 | 3.1 | 1.4 | 7.4 | 12.8 |
| JOMB-48 | 4.7 | 4.8 | 3.0 | 12.4 | 11.0 |



SCREW CAP (스크류캡)

- Material : ABS (Flame Resistance)
- Flammability : UL 94 V-O
- Color : Gray

※특허출원



| Part Number | Mounting Method | Dimension (mm) | | | | Q'ty/bag |
|-------------|-----------------|----------------|------|-----|-----|----------|
| | | D | d | d1 | H | |
| JOBC-M5 | M5 Screw | 22.0 | 10.5 | 5.0 | 9.1 | 300 |



SCREW COVER (스크류커버)

- Material : Polypropylene (Flame Resistance)
- Flammability : UL 94 V-O
- Color : Gray



| Part Number | Mounting Method | Dimension (mm) | | | Q'ty/bag |
|-------------|-----------------|----------------|-----|-----|----------|
| | | D | d | H | |
| JBC-M4 | M4 Screw | 17.3 | 4.4 | 6.8 | 300 |
| JBC-M4L | M4 Screw | 25.0 | 4.4 | 9.0 | 100 |



*JBC-M4L is applicable for bolt with flat and lockwasher.

STAINLESS STEEL CABLE TIES – SELF-LOCKING

(스테인레스 스틸 케이블타이)

- Metal : AISI 304 or AISI 316 Grade stainless steel
- For indoor or outdoor use.
- High temperature applications ranging -80°C to 538°C



| Part Number | | Max. Bundle Dia. (mm) | Length (mm) | Min. Loop Tensile Strength | | Min. Bundle Dia. (mm) | Width (mm) | Thickness (mm) | Package Qty. |
|----------------|----------------|-----------------------------|----------------|-------------------------------|-------|-----------------------------|---------------|-------------------|-----------------|
| AISI 304 | AISI 316 | | | Lbs | Kg | | | | |
| JSST125S-304 | JSST125S-316 | 25 | 125 | 200 | 90.8 | 12.7 | 4.6 | 0.25 | 100 |
| JSST150S-304 | JSST150S-316 | 35 | 150 | | | | | | |
| JSST200S-304 | JSST200S-316 | 51 | 200 | | | | | | |
| JSST260S-304 | JSST260S-316 | 69 | 260 | | | | | | |
| JSST360S-304 | JSST360S-316 | 102 | 360 | | | | | | |
| JSST520S-304 | JSST520S-316 | 152 | 520 | | | | | | |
| JSST680S-304 | JSST680S-316 | 203 | 680 | | | | | | |
| JSST840S-304 | JSST840S-316 | 254 | 840 | | | | | | |
| JSST1000S-304 | JSST1000S-316 | 304 | 1050 | 250 | 113.4 | 12.7 | 6.4 | 0.25 | 100 |
| JSST150LH-304 | JSST150LH-316 | 35 | 150 | | | | | | |
| JSST200LH-304 | JSST200LH-316 | 51 | 200 | | | | | | |
| JSST360LH-304 | JSST360LH-316 | 102 | 360 | | | | | | |
| JSST520LH-304 | JSST520LH-316 | 152 | 520 | | | | | | |
| JSST680LH-304 | JSST680LH-316 | 203 | 680 | | | | | | |
| JSST840LH-304 | JSST840LH-316 | 254 | 840 | | | | | | |
| JSST1000LH-304 | JSST1000LH-316 | 304 | 1050 | | | | | | |
| JSST200H-304 | JSST200H-316 | 51 | 200 | 330 | 150 | 12.7 | 7.9 | 0.25 | 50 |
| JSST260H-304 | JSST260H-316 | 69 | 260 | | | | | | |
| JSST360H-304 | JSST360H-316 | 102 | 360 | | | | | | |
| JSST520H-304 | JSST520H-316 | 152 | 520 | | | | | | |
| JSST680H-304 | JSST680H-316 | 203 | 680 | | | | | | |
| JSST840H-304 | JSST840H-316 | 254 | 840 | | | | | | |
| JSST1000H-304 | JSST1000H-316 | 304 | 1000 | | | | | | |
| JSST440EH-304 | JSST440EH-316 | 102 | 434 | 600 | 272 | 25.4 | 12.7 | 0.25 | 50 |
| JSST600EH-304 | JSST600EH-316 | 152 | 594 | | | | | | |
| JSST760EH-304 | JSST760EH-316 | 203 | 754 | | | | | | |
| JSST920EH-304 | JSST920EH-316 | 254 | 912 | | | | | | |
| JSST1100EH-304 | JSST1100EH-316 | 305 | 1072 | | | | | | |
| JSST440UH-304 | JSST440UH-316 | 102 | 434 | 900 | 408 | 25.4 | 15.9 | 0.38 | 10 |
| JSST600UH-304 | JSST600UH-316 | 152 | 594 | | | | | | |
| JSST760UH-304 | JSST760UH-316 | 203 | 754 | | | | | | |
| JSST920UH-304 | JSST920UH-316 | 254 | 912 | | | | | | |
| JSST1100UH-304 | JSST1100UH-316 | 305 | 1072 | | | | | | |

STAINLESS STEEL CABLE TIES - SEMI-COATED

(스테인레스 스틸 케이블타이 - 반코팅)

- Base metal : AISI 304 or 316 Grade stainless steel
- Semi-Coated Stainless steel ties
- Coating : PVC, Polyester Black (Epoxy), Nylon
- Resistance to chemicals and salt spray
- Helongen free
- Temperature tolerance -40°C to 160°C
- For communication and electrical cables



| Part Number | | Max. Bundle Dia. (mm) | Length (mm) | Min. Loop Tensile Strength | | Min. Bundle Dia. (mm) | Width (mm) | Metal Thickness (mm) | Package Qty. |
|-----------------|-----------------|-----------------------------|----------------|-------------------------------|-------|-----------------------------|---------------|----------------------------|-----------------|
| AISI 304 | AISI 316 | | | Lbs | Kg | | | | |
| JSHT125S-304# | JSHT125S-316# | 25 | 125 | 200 | 90.8 | 12.7 | 4.6 | 0.25 | 100 |
| JSHT150S-304# | JSHT150S-316# | 35 | 150 | | | | | | |
| JSHT200S-304# | JSHT200S-316# | 51 | 200 | | | | | | |
| JSHT260S-304# | JSHT260S-316# | 69 | 260 | | | | | | |
| JSHT360S-304# | JSHT360S-316# | 102 | 360 | | | | | | |
| JSHT520S-304# | JSHT520S-316# | 152 | 520 | | | | | | |
| JSHT680S-304# | JSHT680S-316# | 203 | 680 | | | | | | |
| JSHT840S-304# | JSHT840S-316# | 254 | 840 | | | | | | |
| JSHT1000S-304# | JSHT1000S-316# | 304 | 1050 | 250 | 113.4 | 12.7 | 6.4 | 0.25 | 100 |
| JSHT150LH-304# | JSHT150LH-316# | 35 | 150 | | | | | | |
| JSHT200LH-304# | JSHT200LH-316# | 51 | 200 | | | | | | |
| JSHT360LH-304# | JSHT360LH-316# | 102 | 360 | | | | | | |
| JSHT520LH-304# | JSHT520LH-316# | 152 | 520 | | | | | | |
| JSHT680LH-304# | JSHT680LH-316# | 203 | 680 | | | | | | |
| JSHT840LH-304# | JSHT840LH-316# | 254 | 840 | | | | | | |
| JSHT1000LH-304# | JSHT1000LH-316# | 304 | 1050 | | | | | | |
| JSHT200H-304# | JSHT200H-316# | 51 | 200 | 330 | 150 | 12.7 | 7.9 | 0.25 | 50 |
| JSHT260H-304# | JSHT260H-316# | 69 | 260 | | | | | | |
| JSHT360H-304# | JSHT360H-316# | 102 | 360 | | | | | | |
| JSHT520H-304# | JSHT520H-316# | 152 | 520 | | | | | | |
| JSHT680H-304# | JSHT680H-316# | 203 | 680 | | | | | | |
| JSHT840H-304# | JSHT840H-316# | 254 | 840 | | | | | | |
| JSHT1000H-304# | JSHT1000H-316# | 304 | 1000 | | | | | | |
| JSHT440EH-304# | JSHT440EH-316# | 102 | 434 | 600 | 272 | 25.4 | 12.7 | 0.25 | 50 |
| JSHT600EH-304# | JSHT600EH-316# | 152 | 594 | | | | | | |
| JSHT760EH-304# | JSHT760EH-316# | 203 | 754 | | | | | | |
| JSHT920EH-304# | JSHT920EH-316# | 254 | 912 | | | | | | |
| JSHT1100EH-304# | JSHT1100EH-316# | 305 | 1072 | | | | | | |
| JSHT440UH-304# | JSHT440UH-316# | 102 | 434 | 900 | 408 | 25.4 | 15.9 | 0.38 | 10 |
| JSHT600UH-304# | JSHT600UH-316# | 152 | 594 | | | | | | |
| JSHT760UH-304# | JSHT760UH-316# | 203 | 754 | | | | | | |
| JSHT920UH-304# | JSHT920UH-316# | 254 | 912 | | | | | | |
| JSHT1100UH-304# | JSHT1100UH-316# | 305 | 1072 | | | | | | |

* '#' Suffix mean coating material (P : PVC, E : Epoxy, N : Nylon)

STAINLESS STEEL CABLE TIES – FULLY COATED

(스테인레스 스틸 케이블타이 – 풀코팅)

- Base metal : AISI 304 or 316 Grade stainless steel
- Coating : PVC, Polyester Black (Epoxy), Nylon
- Resistance to chemicals and salt spray
- Helongen free
- Temperature tolerance -40°C to 160°C
- For communication and electrical cables



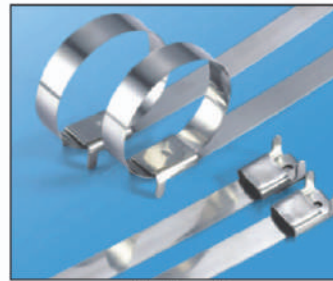
| Part Number | | Max. Bundle Dia. (mm) | Length (mm) | Min. Loop Tensile Strength | | Min. Bundle Dia. (mm) | Width (mm) | Metal Thickness (mm) | Package Qty. |
|-----------------|-----------------|-----------------------|-------------|----------------------------|------|-----------------------|------------|----------------------|--------------|
| AISI 304 | AISI 316 | | | Lbs | Kg | | | | |
| JSFT125S-304# | JSFT125S-316# | 25 | 125 | 100 | 45.4 | 12.7 | 4.6 | 0.25 | 100 |
| JSFT150S-304# | JSFT150S-316# | 35 | 150 | | | | | | |
| JSFT200S-304# | JSFT200S-316# | 51 | 200 | | | | | | |
| JSFT260S-304# | JSFT260S-316# | 69 | 260 | | | | | | |
| JSFT360S-304# | JSFT360S-316# | 102 | 360 | | | | | | |
| JSFT520S-304# | JSFT520S-316# | 152 | 520 | | | | | | |
| JSFT680S-304# | JSFT680S-316# | 203 | 680 | | | | | | |
| JSFT840S-304# | JSFT840S-316# | 254 | 840 | | | | | | |
| JSFT1000S-304# | JSFT1000S-316# | 304 | 1050 | 150 | 67 | 12.7 | 6.4 | 0.25 | 100 |
| JSFT150LH-304# | JSFT150LH-316# | 35 | 150 | | | | | | |
| JSFT200LH-304# | JSFT200LH-316# | 51 | 200 | | | | | | |
| JSFT360LH-304# | JSFT360LH-316# | 102 | 360 | | | | | | |
| JSFT520LH-304# | JSFT520LH-316# | 152 | 520 | | | | | | |
| JSFT680LH-304# | JSFT680LH-316# | 203 | 680 | | | | | | |
| JSFT840LH-304# | JSFT840LH-316# | 254 | 840 | | | | | | |
| JSFT1000LH-304# | JSFT1000LH-316# | 304 | 1050 | | | | | | |
| JSFT200H-304# | JSFT200H-316# | 51 | 200 | 250 | 113 | 12.7 | 7.9 | 0.25 | 50 |
| JSFT260H-304# | JSFT260H-316# | 69 | 260 | | | | | | |
| JSFT360H-304# | JSFT360H-316# | 102 | 360 | | | | | | |
| JSFT520H-304# | JSFT520H-316# | 152 | 520 | | | | | | |
| JSFT680H-304# | JSFT680H-316# | 203 | 680 | | | | | | |
| JSFT840H-304# | JSFT840H-316# | 254 | 840 | | | | | | |
| JSFT1000H-304# | JSFT1000H-316# | 304 | 1000 | | | | | | |
| JSFT440EH-304# | JSFT440EH-316# | 102 | 434 | 300 | 136 | 25.4 | 12.7 | 0.25 | 50 |
| JSFT600EH-304# | JSFT600EH-316# | 152 | 594 | | | | | | |
| JSFT760EH-304# | JSFT760EH-316# | 203 | 754 | | | | | | |
| JSFT920EH-304# | JSFT920EH-316# | 254 | 912 | | | | | | |
| JSFT1100EH-304# | JSFT1100EH-316# | 305 | 1072 | | | | | | |
| JSFT440UH-304# | JSFT440UH-316# | 102 | 434 | 450 | 204 | 25.4 | 15.9 | 0.38 | 10 |
| JSFT600UH-304# | JSFT600UH-316# | 152 | 594 | | | | | | |
| JSFT760UH-304# | JSFT760UH-316# | 203 | 754 | | | | | | |
| JSFT920UH-304# | JSFT920UH-316# | 254 | 912 | | | | | | |
| JSFT1100UH-304# | JSFT1100UH-316# | 305 | 1072 | | | | | | |

* '#' Suffix mean coating material (P : PVC, E : Epoxy, N : Nylon)

STAINLESS STEEL CABLE TIES – WING LOCK TYPE

(스테인레스 스틸 케이블타이 – 록킹타입)

- Material : AISI 316 or AISI 304 Grade stainless steel
- For indoor or outdoor use
- Operating Temperature : -40° ~ 85°
- The wing is easily closed by banding tool(JOT-240)
- Coating : PVC, Polyester Black & Nylon



(A-type)



(B-type)

| Part Number | | Max. Bundle Dia. (mm) | Length (mm) | Min. Loop Tensile Strength | | Width (mm) | Thickness (mm) |
|-----------------|-----------------|-----------------------------|----------------|----------------------------|-----|---------------|-------------------|
| A-type | B-type | | | Lbs | Kg | | |
| JBZ 300H-316A | JBZ 300H-316B | 83 | 300 | 250 | 110 | 7 | 0.25 |
| JBZ 400H-316A | JBZ 400H-316B | 121 | 400 | | | | |
| JBZ 550H-316A | JBZ 550H-316B | 170 | 550 | | | | |
| JBZ 800H-316A | JBZ 800H-316B | 242 | 800 | | | | |
| JBZ 1200H-316A | JBZ 1200H-316B | 369 | 1200 | | | | |
| JBZ 300SH-316A | JBZ 300SH-316B | 83 | 300 | 500 | 226 | 13 | 0.35 |
| JBZ 400SH-316A | JBZ 400SH-316B | 121 | 400 | | | | |
| JBZ 550SH-316A | JBZ 550SH-316B | 170 | 550 | | | | |
| JBZ 800SH-316A | JBZ 800SH-316B | 242 | 800 | | | | |
| JBZ 1200SH-316A | JBZ 1200SH-316B | 369 | 1200 | | | | |
| JBZ 300UH-316A | JBZ 300UH-316B | 83 | 300 | 600 | 271 | 16 | 0.4 |
| JBZ 400UH-316A | JBZ 400UH-316B | 121 | 400 | | | | |
| JBZ 550UH-316A | JBZ 550UH-316B | 170 | 550 | | | | |
| JBZ 800UH-316A | JBZ 800UH-316B | 242 | 800 | | | | |
| JBZ 1200UH-316A | JBZ 1200UH-316B | 369 | 1200 | | | | |
| JBZ 300EH-316A | JBZ 300EH-316B | 83 | 300 | 700 | 316 | 19 | 0.5 |
| JBZ 400EH-316A | JBZ 400EH-316B | 121 | 400 | | | | |
| JBZ 550EH-316A | JBZ 550EH-316B | 170 | 550 | | | | |
| JBZ 800EH-316A | JBZ 800EH-316B | 242 | 800 | | | | |
| JBZ 1200EH-316A | JBZ 1200EH-316B | 369 | 1200 | | | | |

STAINLESS STEEL CABLE TIES – RELEASABLE TYPE

(스테인레스 스틸 케이블타이 – 재사용타입)

- Material : AISI 316 Grade stainless steel
- For indoor or outdoor use
- The buckle design provides fast and easy application, and reuse
- Pure Polyester coated and PPA coated
(PPA is a non-toxic, halogen free and low smoke material)
- Excellent resistance to salt, sand, acids, temperature variations and chemicals.
- Remains flexible at up to -70°



| Part Number | Max. Bundle Dia. (mm) | Length (mm) | Min. Loop Tensile Strength | | Width (mm) |
|-------------|-----------------------------|----------------|----------------------------|-------|---------------|
| | | | Lbs | kg | |
| JRT 150-316 | 33 | 150 | 225 | 102.5 | 10 |
| JRT 190-316 | 46 | 190 | | | |
| JRT 250-316 | 65 | 250 | | | |
| JRT 300-316 | 81 | 300 | | | |
| JRT 350-316 | 97 | 350 | | | |
| JRT 400-316 | 113 | 400 | | | |
| JRT 450-316 | 129 | 450 | | | |
| JRT 490-316 | 141 | 490 | | | |
| JRT 550-316 | 161 | 550 | | | |
| JRT 600-316 | 176 | 600 | | | |
| JRT 650-316 | 192 | 650 | | | |
| JRT 700-316 | 208 | 700 | | | |

HAND OPERATED INSTALLATION TOOLS (스테인레스 스틸 케이블타이 결속공구)



JOT 2065-3

- For cable tie thickness up to 0.3mm width up to 7.9mm steel plate (Tpr trigger handle)
- Automatically tensions and cuts off tie when predetermined tension is reached

| Strength Level | Tension strength Minimum |
|----------------|--------------------------|
| 1 | 31.5kgs |
| 2 | 47kgs |
| 3 | 58.7kgs |
| 4 | 65kgs |



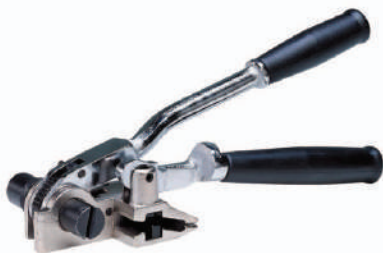
JOT 2065-2

- For cable tie thickness up to 0.3mm width up to 7.9mm steel plate
- Tool tension is controlled by installer - lever action cut-off



JOT 2065-4

- For type of stainless steel tie for ball lock buckle
- For tie width : 4.6mm ~ 19mm
- Thickness up to 0.76mm
- Feature : Tension and cut off, Unique 3-way handle can be used in various positions, Specially useful in tight areas with minimal access



JOT-240

- For cable tie thickness up to 1.2mm width up to 19mm steel plate
- Durable tensioner with cutter and hammer knob for binding irregular



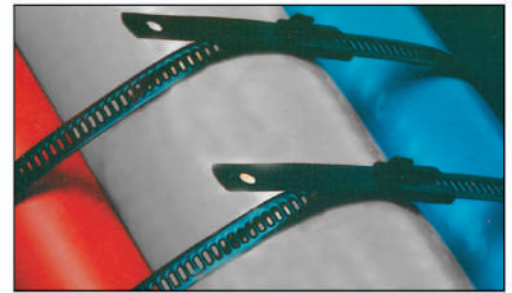
JOT-210

- For cable tie thickness up to 1.2mm width up to 19mm steel plate
- Push bar tensioner with breaker nose to cut the strap

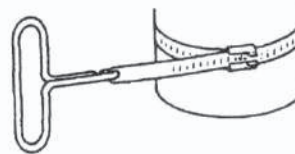
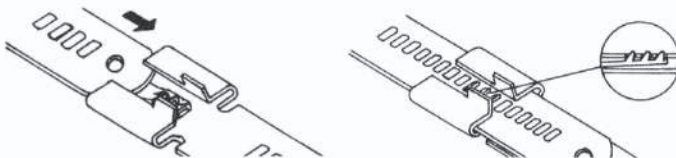
D

MULTI - LOCK TIES (멀티록타이)

- Metal : AISI 316 Grade Stainless Steel
- Coating : Black Polyester
- Coated Thickness : 0.46mm
- Locking Ties Available Coated and Uncoated
- Self or Multiple Locking System
- For Single Use Applications
- Fire, UV, Weather and Corrosion Resistant ; Provides Long Term, Safe and Strong Cable Bundling



Installation



**Tensioning Hook
JSPET-1**

Uncoated Ties

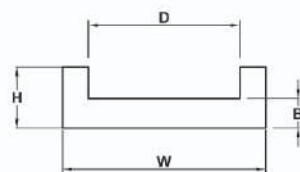
| Part Number | Bundle Dia. (mm) | Length (mm) | Width (mm) | Tensile kg(Lbs) Min. Loop | Thickness (mm) |
|-------------|------------------|-------------|------------|------------------------------|----------------|
| JSLT 152 | 36 | 152 | 7 | 45(100) | 0.25 |
| JSLT 229 | 61 | 229 | | | |
| JSLT 305 | 85 | 305 | | | |
| JSLT 457 | 133 | 457 | | | |
| JSLT 610 | 182 | 610 | | | |
| JSLT 229 | 61 | 229 | 12 | 67(147) | |
| JSLT 305 | 85 | 305 | | | |
| JSLT 457 | 133 | 457 | | | |
| JSLT 610 | 182 | 610 | | | |

Coated Ties

| Part Number | Bundle Dia. (mm) | Length (mm) | Width (mm) | Tensile kg(Lbs) Min. Loop |
|-------------|------------------|-------------|------------|------------------------------|
| JSLTC 152 | 36 | 152 | 7 | 45(100) |
| JSLTC 229 | 61 | 229 | | |
| JSLTC 305 | 85 | 305 | | |
| JSLTC 457 | 133 | 457 | | |
| JSLTC 610 | 182 | 610 | | |
| JSLTC 229 | 61 | 229 | 12 | 67(147) |
| JSLTC 305 | 85 | 305 | | |
| JSLTC 457 | 133 | 457 | | |
| JSLTC 610 | 182 | 610 | | |

CUSHION SLEEVE (쿠션슬리브)

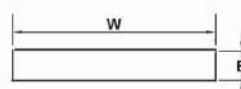
- Material : Neoprene (A-type)
- Color : Black
- Used on applications requiring improved gripping on non-resilient objects
- Can be used indoors and outdoors
- Isolation between dissimilar metals allows the ties and straps to be used with aluminum cable tray
- Provides full separation between the ties and the bundle
- Operating temperature -40°C to 93°C



| Part Number | Maximum Tie Width Accom | Dimensions (mm) | | | | Length |
|-------------|-------------------------|-----------------|------|-----|-----|--------------|
| | | D | W | H | B | |
| JCS 84 | 6.4 | 6.5 | 8.4 | 3.1 | 1.5 | 30M per Roll |
| JCS 119 | 7.9 | 8.0 | 11.9 | 3.4 | 1.8 | |
| JCS 168 | 12.7 | 12.8 | 16.8 | 4.1 | 2.5 | |

PVC STRIP (PVC스트립)

- Material : PVC
- Color : Black
- Can be used indoors and outdoors

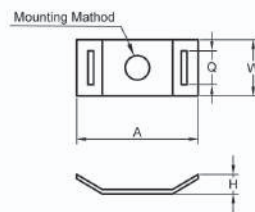


| Part Number | Dimensions (mm) | | Length |
|-------------|-----------------|-----|--------------|
| | W | B | |
| JCS 20 | 20 | 1.7 | 20M per Roll |
| JCS 30 | 30 | 1.7 | |
| JCS 30 | 60 | 1.7 | |

STAINLESS STEEL CABLE TIE MOUNTS

(스테인레스 스틸 2-way 마운팅 베이스)

- Material : AISI 316 Grade Stainless Steel
- Available in two sizes taking cable ties up to 8.0mm width
- Simply installed with M4 or M6 screw or bolt.



| Part Number | Max.Tie Width Accom. | Mounting Method | Dimensions (mm) | | | | Package Qty. |
|-------------|----------------------|-----------------|-----------------|-----|------|-----|--------------|
| | | | A | H | E | Q | |
| JSCTM 4 | 7.9 | M4 screw | 29.2 | 5.2 | 15.0 | 9.0 | 100 |
| JSCTM 6 | | M6 screw | | | | | |

STAINLESS STEEL MOUNTING BASE

(스테인레스 스틸 마운팅 베이스)

- Material : AISI 316 Grade Stainless Steel

| Part Number | Max.Tie Width Accom. | Mounting Method | Length (mm) | Width (mm) | Package Qty. |
|-------------|----------------------|-----------------|-------------|------------|--------------|
| JSM-4 | 7.9 | M4 screw | 31.8 | 9.5 | 100 |



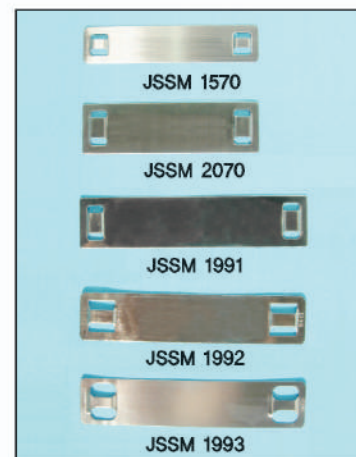
STAINLESS STEEL MARKER PLATE

(스테인레스 스틸 마커플레이트)

- Material : AISI 304 or 316 Grade Stainless Steel

| Part Number | Max.Tie Width Accom. | Width (mm) | Length (mm) | Thickness (mm) | Package Qty. | | |
|---------------|----------------------|------------|-------------|----------------|--------------|--|--|
| JSSM 1570-304 | 4.6 | 15 | 70 | 0.25 | 100 | | |
| JSSM 1570-316 | | | | | | | |
| JSSM 2070-304 | | 20 | 70 | | | | |
| JSSM 2070-316 | | | | | | | |
| JSSM 1991-304 | 7.9 | 19 | 90 | | | | |
| JSSM 1991-316 | | | | | | | |
| JSSM 1992-304 | | 19 | 90 | | | | |
| JSSM 1992-316 | | | | | | | |
| JSSM 1993-304 | | | | | | | |
| JSSM 1993-316 | | | | | | | |

Used with JEONO® Stainless Steel Cable Tie



INDENTER PRESS (표식 각인 프레스)

Model no. : MMK-A01



Data sheet of character plate

- Character plate Material : imported CR TOSG
- Character plate Hardness : HV58
- Character plate outside diameter : 80.5mm
- Character plate inside diameter : 14.1mm
- Character plate thickness : 6mm
- Letter size : 2-6mm
- Content of character plate :
 - Letter : A B C D E F G H I J K L M N O P Q R S T U V W X Y Z
 - Number : 1 2 3 4 5 6 7 8 9 0
 - Symbols : - X / -
- Theory of Life of character plate :
 - more than 200,000 times continuously printing on stainless steel nameplate

Letter size : Please advise the size you need when place order.

- 2mm character plate : height 2mm, width 1.1mm
- 2.5mm character plate : height 2.5mm, width 1.3mm
- 3mm character plate : height 3mm, width 1.6mm
- 4mm character plate : height 3mm, width 2.1mm
- 5mm character plate : height 5mm, width 2.6mm
- 6mm character plate : height 6mm, width 2.8mm

Model no. : MMK-A02



Data sheet of character plate

- Character plate Material : imported CR TOSG
- Character plate Hardness : HV58
- Character plate outside diameter : 80.5mm
- Character plate inside diameter : 14.1mm
- Character plate thickness : 6mm
- Letter size : 2-6mm
- Content of character plate :
 - Letter : A B C D E F G H I J K L M N O P Q R S T U V W X Y Z
 - Number : 1 2 3 4 5 6 7 8 9 0
 - Symbols : - X / -
- Theory of Life of character plate :
 - more than 200,000 times continuously printing on stainless steel nameplate

Letter size : Please advise the size you need when place order.

- 2mm character plate : height 2mm, width 1.1mm
- 3mm character plate : height 3mm, width 1.6mm
- 4mm character plate : height 3mm, width 2.1mm
- 5mm character plate : height 5mm, width 2.6mm

ELECTRICAL ENGRAVING PENCIL (전자식 문자 각인 펜슬)

Model no. : MMK-B03

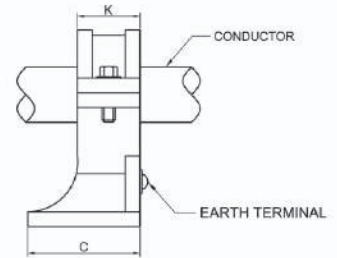
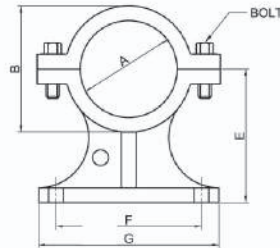


Parameter :

- The voltage range : 220V
- Power : 25W
- Marking area : unlimited
- Marking depth : Less than 1mm
- Letter size : unlimited

CABLE BRACKET (케이블브라켓) TYPE-BK

• Material : Aluminum Alloy



| Part Number | Dimension (mm) | | | | | | |
|-------------|----------------|-----|-----|-----|-----|-----|----|
| | F | E | C | A | G | B | K |
| JOBK 31 | 35 | 40 | 50 | 25 | 65 | 35 | 24 |
| JOBK 32 | 50 | 50 | 50 | 35 | 75 | 45 | 25 |
| JOBK 33 | 55 | 60 | 60 | 45 | 85 | 55 | 26 |
| JOBK 34 | 75 | 80 | 70 | 60 | 115 | 72 | 28 |
| JOBK 35 | 80 | 90 | 70 | 70 | 120 | 82 | 30 |
| JOBK 36 | 110 | 110 | 80 | 90 | 150 | 104 | 28 |
| JOBK 37 | 120 | 120 | 90 | 100 | 170 | 116 | 40 |
| JOBK 38 | 150 | 140 | 100 | 120 | 200 | 135 | 41 |
| JOBK 39 | 170 | 150 | 100 | 140 | 200 | 156 | — |

CABLE TREFOIL CLEAT TYPE-TC (케이블클릿트)

• Material : Aluminum Alloy



Fig 1



Fig 2



Fig 3

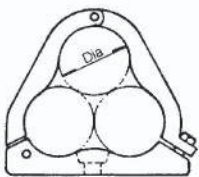


Fig 1

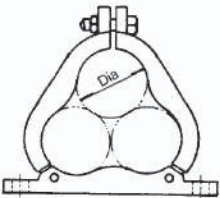


Fig 2

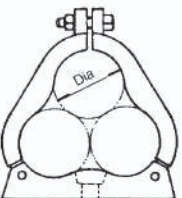
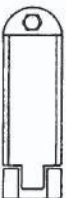


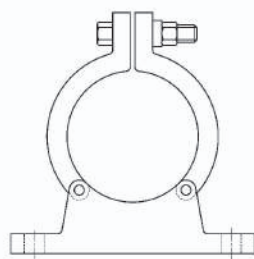
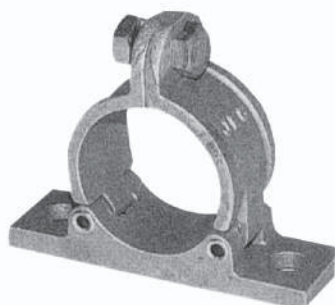
Fig 3



| Part Number | | | Cable Dia (mm) | |
|-------------|----------|----------|----------------|-----|
| Fig1 | Fig2 | Fig3 | Min. | Max |
| JTC 100A | JTC 100B | JTC 100C | 21 | 23 |
| JTC 101A | JTC 101B | JTC 101C | 24 | 25 |
| JTC 102A | JTC 102B | JTC 102C | 25 | 27 |
| JTC 103A | JTC 103B | JTC 103C | 27 | 28 |
| JTC 104A | JTC 104B | JTC 104C | 28 | 30 |
| JTC 105A | JTC 105B | JTC 105C | 30 | 32 |
| JTC 106A | JTC 106B | JTC 106C | 32 | 34 |
| JTC 107A | JTC 107B | JTC 107C | 34 | 35 |
| JTC 108A | JTC 108B | JTC 108C | 35 | 36 |
| JTC 109A | JTC 109B | JTC 109C | 36 | 38 |
| JTC 110A | JTC 110B | JTC 110C | 38 | 40 |
| JTC 111A | JTC 111B | JTC 111C | 40 | 41 |
| JTC 112A | JTC 112B | JTC 112C | 41 | 43 |
| JTC 113A | JTC 113B | JTC 113C | 43 | 44 |
| JTC 114A | JTC 114B | JTC 114C | 44 | 46 |
| JTC 115A | JTC 115B | JTC 115C | 46 | 48 |
| JTC 116A | JTC 116B | JTC 116C | 48 | 49 |
| JTC 117A | JTC 117B | JTC 117C | 49 | 51 |
| JTC 118A | JTC 118B | JTC 118C | 51 | 53 |
| JTC 119A | JTC 119B | JTC 119C | 53 | 54 |
| JTC 120A | JTC 120B | JTC 120C | 54 | 55 |
| JTC 121A | JTC 121B | JTC 121C | 55 | 57 |
| JTC 122A | JTC 122B | JTC 122C | 57 | 59 |
| JTC 123A | JTC 123B | JTC 123C | 59 | 60 |
| JTC 124A | JTC 124B | JTC 124C | 60 | 62 |
| JTC 125A | JTC 125B | JTC 125C | 62 | 63 |
| JTC 126A | JTC 126B | JTC 126C | 63 | 65 |
| JTC 127A | JTC 127B | JTC 127C | 66 | 67 |
| JTC 128A | JTC 128B | JTC 128C | 68 | 70 |
| JTC 129A | JTC 129B | JTC 129C | 71 | 72 |
| JTC 130A | JTC 130B | JTC 130C | 73 | 75 |
| JTC 131A | JTC 131B | JTC 131C | 76 | 77 |
| JTC 132A | JTC 132B | JTC 132C | 78 | 80 |

SINGLE WAY CABLE CLEAT (싱글타입 케이블클릿) TYPE-SCO

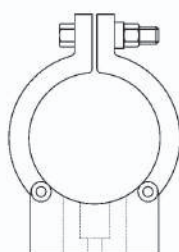
• Material : Aluminum Alloy



| Part Number | Cable Dia (mm) | | Part Number | Cable Dia (mm) | | Part Number | Cable Dia (mm) | |
|-------------|----------------|------|-------------|----------------|------|-------------|----------------|------|
| | Min. | Max. | | Min. | Max. | | Min. | Max. |
| JSCO-95 | 21 | 23 | JSCO-16 | 60 | 62 | JSCO-36 | 102 | 104 |
| JSCO-96 | 24 | 26 | JSCO-17 | 62 | 64 | JSCO-37 | 105 | 106 |
| JSCO-97 | 28 | 29 | JSCO-18 | 64 | 65 | JSCO-38 | 107 | 109 |
| JSCO-98 | 30 | 32 | JSCO-19 | 65 | 67 | JSCO-39 | 110 | 111 |
| JSCO-99 | 33 | 35 | JSCO-20 | 67 | 68 | JSCO-40 | 112 | 114 |
| JSCO-01 | 36 | 38 | JSCO-21 | 68 | 70 | JSCO-41 | 115 | 116 |
| JSCO-02 | 38 | 40 | JSCO-22 | 70 | 71 | JSCO-42 | 117 | 119 |
| JSCO-03 | 40 | 41 | JSCO-23 | 71 | 73 | JSCO-43 | 120 | 121 |
| JSCO-04 | 41 | 43 | JSCO-24 | 73 | 75 | JSCO-44 | 122 | 124 |
| JSCO-05 | 43 | 44 | JSCO-25 | 75 | 76 | JSCO-45 | 125 | 126 |
| JSCO-06 | 44 | 46 | JSCO-26 | 77 | 78 | JSCO-46 | 127 | 129 |
| JSCO-07 | 46 | 48 | JSCO-27 | 79 | 81 | JSCO-47 | 130 | 131 |
| JSCO-08 | 48 | 49 | JSCO-28 | 82 | 83 | JSCO-48 | 132 | 134 |
| JSCO-09 | 49 | 51 | JSCO-29 | 84 | 86 | JSCO-49 | 135 | 136 |
| JSCO-10 | 51 | 53 | JSCO-30 | 87 | 88 | JSCO-50 | 137 | 139 |
| JSCO-11 | 53 | 54 | JSCO-31 | 89 | 91 | JSCO-51 | 139 | 140 |
| JSCO-12 | 54 | 56 | JSCO-32 | 92 | 93 | JSCO-52 | 141 | 142 |
| JSCO-13 | 56 | 57 | JSCO-33 | 94 | 96 | JSCO-53 | 143 | 144 |
| JSCO-14 | 57 | 58 | JSCO-34 | 97 | 98 | JSCO-54 | 144 | 145 |
| JSCO-15 | 59 | 60 | JSCO-35 | 99 | 101 | JSCO-55 | 146 | 148 |

SINGLE WAY CABLE CLEAT (싱글타입 케이블클릿) TYPE-SCI

• Material : Aluminum Alloy



| Part Number | Cable Dia (mm) | | Part Number | Cable Dia (mm) | | Part Number | Cable Dia (mm) | |
|-------------|----------------|------|-------------|----------------|------|-------------|----------------|------|
| | Min. | Max. | | Min. | Max. | | Min. | Max. |
| JSCI-95 | 21 | 23 | JSCI-16 | 60 | 62 | JSCI-36 | 102 | 104 |
| JSCI-96 | 24 | 26 | JSCI-17 | 62 | 64 | JSCI-37 | 105 | 106 |
| JSCI-97 | 28 | 29 | JSCI-18 | 64 | 65 | JSCI-38 | 107 | 109 |
| JSCI-98 | 30 | 32 | JSCI-19 | 65 | 67 | JSCI-39 | 110 | 111 |
| JSCI-99 | 33 | 35 | JSCI-20 | 67 | 68 | JSCI-40 | 112 | 114 |
| JSCI-01 | 36 | 38 | JSCI-21 | 68 | 70 | JSCI-41 | 115 | 116 |
| JSCI-02 | 38 | 40 | JSCI-22 | 70 | 71 | JSCI-42 | 117 | 119 |
| JSCI-03 | 40 | 41 | JSCI-23 | 71 | 73 | JSCI-43 | 120 | 121 |
| JSCI-04 | 41 | 43 | JSCI-24 | 73 | 75 | JSCI-44 | 122 | 124 |
| JSCI-05 | 43 | 44 | JSCI-25 | 75 | 76 | JSCI-45 | 125 | 126 |
| JSCI-06 | 44 | 46 | JSCI-26 | 77 | 78 | JSCI-46 | 127 | 129 |
| JSCI-07 | 46 | 48 | JSCI-27 | 79 | 81 | JSCI-47 | 130 | 131 |
| JSCI-08 | 48 | 49 | JSCI-28 | 82 | 83 | JSCI-48 | 132 | 134 |
| JSCI-09 | 49 | 51 | JSCI-29 | 84 | 86 | JSCI-49 | 135 | 136 |
| JSCI-10 | 51 | 53 | JSCI-30 | 87 | 88 | JSCI-50 | 137 | 139 |
| JSCI-11 | 53 | 54 | JSCI-31 | 89 | 91 | JSCI-51 | 139 | 140 |
| JSCI-12 | 54 | 56 | JSCI-32 | 92 | 93 | JSCI-52 | 141 | 142 |
| JSCI-13 | 56 | 57 | JSCI-33 | 94 | 96 | JSCI-53 | 143 | 144 |
| JSCI-14 | 57 | 58 | JSCI-34 | 97 | 98 | JSCI-54 | 144 | 145 |
| JSCI-15 | 59 | 60 | JSCI-35 | 99 | 101 | JSCI-55 | 146 | 148 |

CABLE CLEATS – TREFOIL & SINGLE TYPE (스텐인레스 스틸 케이블클릿트)

- For fixing, retaining, supporting & securing cables in trefoil or single formation.
- Protecting cables from short circuit faults. Construction Data of the Cable Cleats

| Construction Data of the Cable Cleats | |
|---------------------------------------|---|
| Cleat material | Composite |
| Cleat Material | Composite |
| Frame | 54mm*2.0mm, maring grade, Non-magnetic 316L |
| Closure Hardware | 316SS M8 or M10 bolt and Nyion Look Nut |
| Integral Pad | Smoke, Low Fume, Halogen Free |
| Tools Required | Wrench |
| Mounting Bolt | Provided with the Cable Cleat |



| Performance on the Cable Cleats | |
|---------------------------------------|--------------------------|
| Resistance to Electromechanical Force | 230KA perk 300mm Spacing |
| Lateral Load Test | average 25kg |
| Axial Load Test | Pass |
| Max and Min Temperature | -40°C ~ -120°C |
| Resistance to Impact | Very Haavy |
| Needle Flame Test | 30 Seconds |



Introduction

JEONO Cable Cleats are designed to support and retain your cables within your cable tray system in every condition. More importantly, they prevent the damage in short circuit condition. Unfortunately, short circuit always happens, and when it do, it's destructive and dangerous to the cables and cable system.

JEONO Cable Cleats are one of the first lines of defense to help protect the personnel, the cables and the cable system.



How to select the Cable Cleats

1. Know the Cables

Which type of cable is being used, Single or Multi-Conductor?

What is the outer diameter of Cables?

What is the cable arrangement, Flat or Trefoil?

If a ground wire is installed in the cleats, know the outer Diameter of the ground wire.

2. Know the System

What is the available short circuit current (RMS or IP Peak)?

What type of cable tray is installed?

3. Short Circuit Current Test

Short circuit current is an over current resulting from an electrical fault of negligible impedance between live conductors or between a live conductor and an earth, having a difference in potential under normal operating conditions.

RMS current is a calculated value for the initial cycles of the fault. IP Peak short current is a maximum possible instantaneous value of the short circuit current.

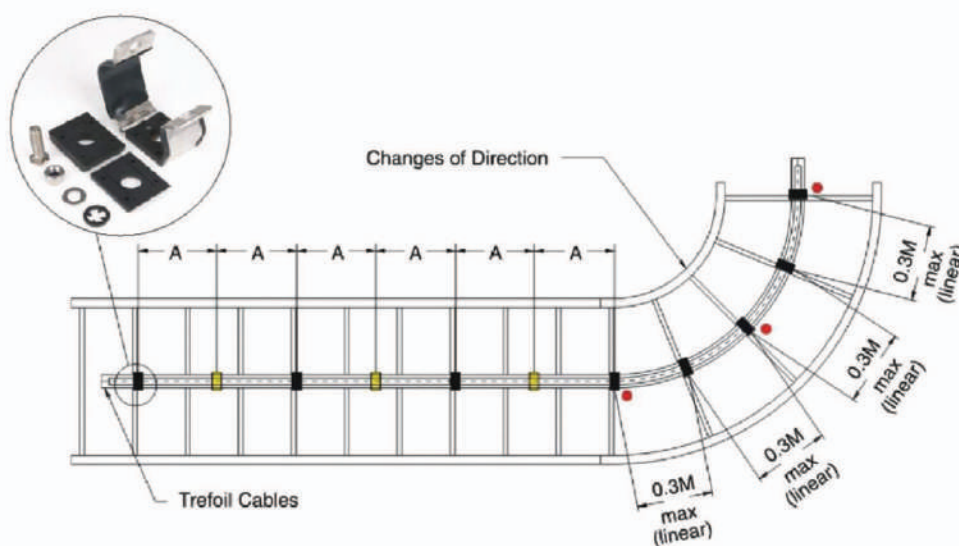
Electromechanical Force is included forces acting on current carrying conductors. Relevant Standard: IEC 61914

Installation for Cable Cleat



Installation Note

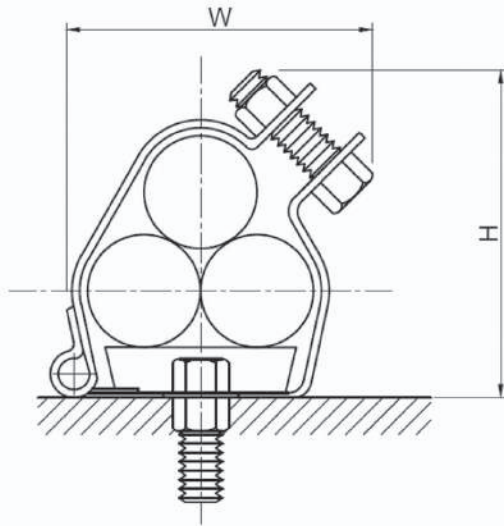
The Cleats should be installed properly to secure the cables. It is not necessary for every cleat to be attached onto the tray. Every cleat should be resisted to keep cables bundling. The bend radius should be 8 to 12 times of the cable diameter. The cleats should always be installed at the beginning, the middle, the end of the bend part. The distance between the cleats on the bend should be no more than 0.3M from center to center.



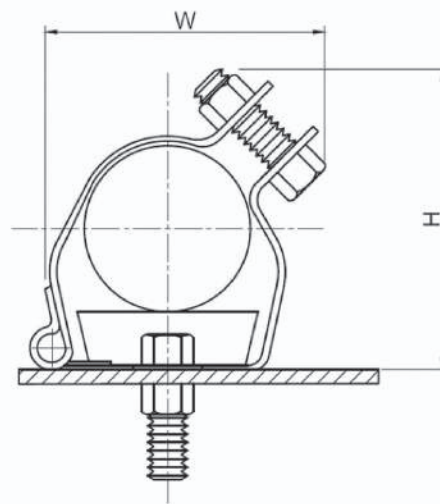
DETERMINE THE CLEAT SPACE FOR INSTALLATION

| Single Conductor Short Circuit Withstand Table | | | | | | | | | | | | | | | | | | | | | |
|--|-------|--|-----|-----|-----|-----|-----|-----|-----|-----|-----|-----|-----|-----|-----|-----|-----|------|-----|-----|-----|
| Max Cable Cleat Spacing(A) | | Spacing Between Conductor Centers (mm) | | | | | | | | | | | | | | | | | | | |
| | | 23 | 25 | 27 | 29 | 31 | 33 | 35 | 37 | 39 | 41 | 43 | 45 | 47 | 49 | 51 | 53 | 55 | 57 | 59 | 61 |
| mm | In | IP peak (KA) | | | | | | | | | | | | | | | | | | | |
| 225 | 8.858 | 179 | 187 | 194 | 203 | 209 | 216 | 220 | 229 | 234 | 240 | 246 | 250 | 255 | 261 | 266 | 271 | 276 | 281 | 286 | 291 |
| 300 | 11.81 | 155 | 163 | 168 | 174 | 181 | 187 | 192 | 198 | 203 | 209 | 214 | 215 | 220 | 225 | 230 | 235 | 239 | 244 | 248 | 252 |
| 450 | 17.72 | 128 | 133 | 137 | 144 | 148 | 152 | 157 | 161 | 165 | 170 | 174 | 178 | 180 | 184 | 188 | 192 | 195 | 199 | 202 | 206 |
| 600 | 23.62 | 110 | 115 | 119 | 124 | 128 | 132 | 135 | 139 | 143 | 148 | 150 | 153 | 156 | 160 | 163 | 166 | 1639 | 172 | 175 | 178 |
| 675 | 26.57 | 104 | 108 | 113 | 117 | 121 | 124 | 128 | 132 | 135 | 139 | 143 | 147 | 147 | 150 | 154 | 156 | 159 | 162 | 165 | 168 |
| 900 | 35.43 | 89 | 93 | 97 | 102 | 105 | 108 | 110 | 115 | 117 | 121 | 124 | 127 | 128 | 130 | 133 | 135 | 138 | 140 | 143 | 145 |

Trefoil Cleats



Single Cleats



| Part Number | Cable Ranged (mm) | | Dimensions (mm) | |
|-------------|-------------------|----------|-----------------|-----|
| | Min. Dia | Max. Dia | H | W |
| FF-T1323 | 13 | 23 | 73 | 68 |
| FF-T2125 | 21 | 25 | 75 | 72 |
| FF-T2329 | 23 | 29 | 80 | 79 |
| FF-T2531 | 25 | 31 | 83 | 82 |
| FF-T2733 | 27 | 33 | 84 | 85 |
| FF-T2935 | 29 | 35 | 89 | 90 |
| FF-T3238 | 32 | 38 | 92 | 96 |
| FF-T3541 | 35 | 41 | 98 | 100 |
| FF-T3844 | 38 | 44 | 100 | 106 |
| FF-T4248 | 42 | 48 | 104 | 113 |
| FF-T4551 | 45 | 51 | 107 | 120 |
| FF-T4753 | 47 | 53 | 110 | 122 |
| FF-T4955 | 49 | 55 | 113 | 125 |
| FF-T5157 | 51 | 57 | 115 | 127 |
| FF-T5359 | 53 | 59 | 118 | 135 |
| FF-T5561 | 55 | 61 | 122 | 138 |
| FF-T5763 | 57 | 63 | 125 | 141 |
| FF-T5965 | 59 | 65 | 126 | 145 |
| FF-T6167 | 61 | 67 | 131 | 148 |
| FF-T6369 | 63 | 69 | 134 | 153 |
| FF-T6571 | 65 | 71 | 139 | 155 |
| FF-T6773 | 67 | 73 | 143 | 156 |
| FF-T6975 | 69 | 75 | 146 | 161 |
| FF-T7177 | 71 | 77 | 150 | 164 |
| FF-T7379 | 73 | 79 | 154 | 166 |
| FF-T7581 | 75 | 81 | 157 | 170 |
| FF-T7783 | 77 | 83 | 160 | 174 |
| FF-T7985 | 79 | 85 | 162 | 178 |
| FF-T8187 | 81 | 87 | 168 | 181 |
| FF-T8389 | 83 | 89 | 172 | 185 |
| FF-T8896 | 88 | 96 | 180 | 195 |
| FF-T96103 | 96 | 103 | 189 | 203 |
| FF-T103111 | 103 | 111 | 198 | 206 |
| FF-T111119 | 111 | 119 | 207 | 215 |
| FF-T119128 | 119 | 128 | 216 | 223 |

| Part Number | Cable Ranged (mm) | | Dimensions (mm) | |
|-------------|-------------------|----------|-----------------|-----|
| | Min. Dia | Max. Dia | H | W |
| FF-S2832 | 28 | 32 | 60 | 57 |
| FF-S3034 | 30 | 34 | 61 | 59 |
| FF-S3236 | 32 | 36 | 63 | 61 |
| FF-S3438 | 34 | 38 | 65 | 63 |
| FF-S3640 | 36 | 40 | 67 | 64 |
| FF-S3842 | 38 | 42 | 69 | 65 |
| FF-S4044 | 40 | 44 | 70 | 68 |
| FF-S4246 | 42 | 46 | 71 | 69 |
| FF-S4448 | 44 | 48 | 73 | 72 |
| FF-S4650 | 46 | 50 | 74 | 73 |
| FF-S4852 | 48 | 52 | 75 | 77 |
| FF-S5054 | 50 | 54 | 78 | 78 |
| FF-S5256 | 52 | 56 | 79 | 80 |
| FF-S5458 | 54 | 58 | 80 | 82 |
| FF-S5660 | 56 | 60 | 81 | 85 |
| FF-S5862 | 58 | 62 | 82 | 87 |
| FF-S6064 | 60 | 64 | 85 | 88 |
| FF-S6266 | 62 | 66 | 87 | 90 |
| FF-S6468 | 64 | 68 | 89 | 91 |
| FF-S6670 | 66 | 70 | 90 | 92 |
| FF-S6872 | 68 | 72 | 92 | 94 |
| FF-S7074 | 70 | 74 | 95 | 97 |
| FF-S7276 | 72 | 76 | 97 | 99 |
| FF-S7478 | 74 | 78 | 98 | 102 |
| FF-S7680 | 76 | 80 | 100 | 104 |
| FF-S7882 | 78 | 82 | 102 | 106 |
| FF-S8084 | 80 | 84 | 105 | 107 |
| FF-S8286 | 82 | 86 | 107 | 110 |
| FF-S8488 | 84 | 88 | 109 | 111 |
| FF-S8690 | 86 | 90 | 110 | 113 |
| FF-S9094 | 90 | 94 | 115 | 121 |
| FF-S94118 | 94 | 118 | 133 | 139 |
| FF-S118130 | 118 | 130 | 140 | 144 |
| FF-S127150 | 127 | 150 | 161 | 166 |